

# L39-B3

- ▶ Engine model: Weichai WP6G125E22
- ▶ Rated power: 92 kW/2200 rpm
- ▶ Operating weight: 10.8 t

## Product features

L39-B3 is an all-new designed 3t long-wheelbase planetary transmission loader product. It's mainly applicable for medium/small-scale aggregate yards, mixing stations, small coal mines, farmlands, pastures, and urban and road constructions. With longer wheelbase, it can features more extensive application scenes.



## HS MACHINERY & EQUIPMENT SDN. BHD.

### SHOWROOM

PMT 1280, Lorong Perusahaan Sg. Lokan 3,  
Kawasan Perusahaan Sg. Lokan 13800 B.W.

Tel: 04-3567668 Fax: 04-3567669

[www.hsg.com.my](http://www.hsg.com.my)



**SHANTUI**  
LET'S MAKE CONSTRUCTION EASIER

	Standard Arm	Extended Arm	Long Arm
Overall length	7148mm	7275 mm	7395 mm
Overall width	2518mm	2518 mm	2518 mm
Overall height	3235mm	3235 mm	3235 mm

L39-B3

Technical specifications:

	GENERAL SPECIFICATIONS	Operating weight	10800 kg		
		Rated Load	3000 kg		
		Bucket capacity	1.8 m <sup>3</sup>		
		Breakout force	105 kN		
		Static tipping load (full turn)	6000 kg		
		Dumping height (Standard/Extended/Long)	2875/3057/3200 mm		
		Dumping reach (Standard/Extended/Long)	955/906/886 mm		

	ENGINE	Engine model	Weichai WP6G125E22		
		Type	In-line, water-cooled, 6-cylinder, direct injection, turbocharged		
		Rated power	92 kW		
		Rated speed	2200 rpm		
		Displacement	6.75 L		
		Maximum torque	510 N·m		
		Minimum fuel consumption	193.8 g/kW·h		

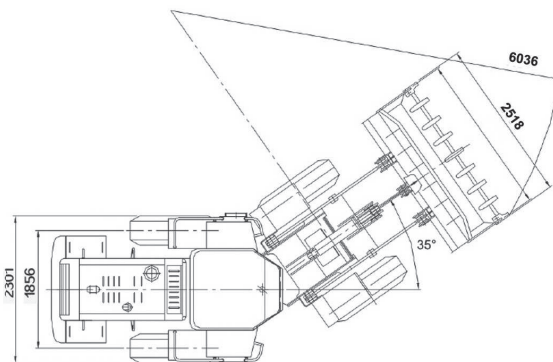
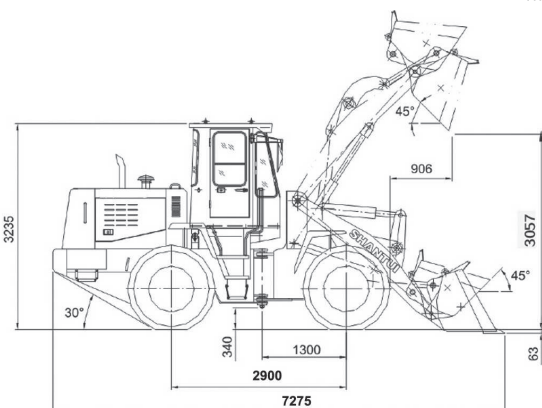
	TRAVEL SPEED	Gear	1st	2nd	3rd	4th
		Forward	0~12.5 km/h	0~38 km/h	-	-
		Reverse	0~16.4 km/h	-	-	-

	AXLES AND FINAL DRIVES	DRIVE SYSTEM		Four-wheel drive	
		Gradeability		30°	
		Maximum traction		110 kN	
		BRAKE SYSTEM:	Service brakes	Air over hydraulic disc brakes on 4 wheels	
			Parking brake	Manual parking brake	
		STEERING SYSTEM:	Type	Articulated type, full-hydraulic power steering	
			Maximum steering angle	38° each direction	
			Turning Radius to Outside of Tires	5415 mm	
			Turning Radius to Outside of Bucket	6036 mm	
		TIRES	Type	17.5-25 12PR	
			Pattern level	L3	
			Center distance of tires	1856 mm	
			Wheel base	2900 mm	

	HYDRAULIC SYSTEM	Hydraulic cycle time (rated load in bucket)	Lifting time/ Lifting, dumping and lowering	4.8/8.9 s

OVERALL DIMENSIONS

▶ THE SPECIFICATIONS ARE SUBJECT TO CHANGE WITHOUT NOTICE. THE PICTURES MAY INCLUDE OPTIONS. THE ACTUAL COLOR & APPEARANCE OF THE PRODUCT MAY DIFFER FROM WHAT IS SHOWN.



Wheel Loader Series

# L55-B5

- ▶ Engine Model: WD10G220E23
- ▶ Gross Power: 162kW(220HP)@2000rpm
- ▶ Operating Weight: 16,400kg
- ▶ Bucket Capacity: 3m<sup>3</sup>

**SHANTUI**  
VALUE THAT WORKS

New Appearance  
better performance



LET'S MAKE CONSTRUCTION EASIER



**HS MACHINERY  
& EQUIPMENT SDN. BHD.**

SHOWROOM

PMT 1280, Lorong Perusahaan Sg. Lokan 3,  
Kawasan Perusahaan Sg. Lokan 13800 B.W.

Tel: 04-3567668 Fax: 04-3567669

[www.hsg.com.my](http://www.hsg.com.my)



**SHANTUI**  
LET'S MAKE CONSTRUCTION EASIER

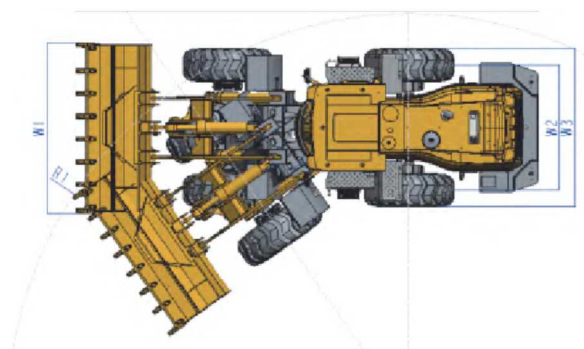
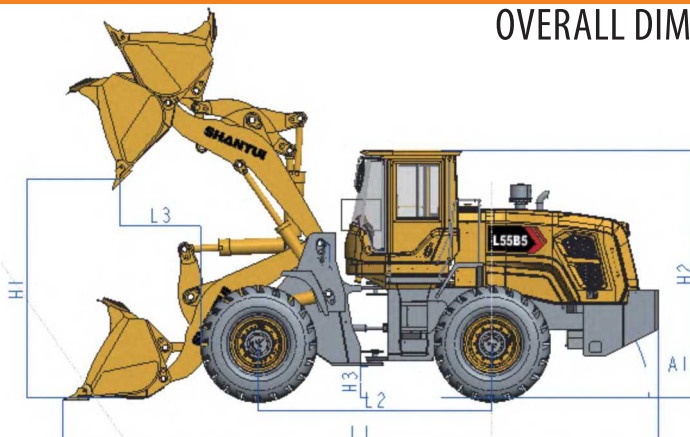
**L55-B5**  
WHEEL LOADER

Technical specifications:

ENGINE	
Emission	Tier 2 / Stage II
Model	Weichai WD10G220E23
Rated Power	162 kW (220 hp) @ 2,000 rpm
Max Torque	900 N · m
Displacement	9.726 L
Number of Cylinders	6
LOADER ARM PERFORMANCE	
Tipping Load - Full Turn	10000 kg
Bucket Breakout Force	170 kN
Maximum Dump Angle at Full Height	45°
Dump Clearance at Full Height Discharge	3044 mm
Dump Reach at Full Height Discharge	1114 mm
Maximum Hinge Pin Height	4186 mm
Maximum Digging Depth, Bucket Level	40 mm
Bucket Capacity	3 m <sup>3</sup>
Operating Weight	16400kg
TRANSMISSION	
Transmission Type	Planetary, power shift
Torque Converter	Single stage, four elements
Maximum Travel Speed, fwd	40 km/h
Maximum Travel Speed, rev	15 km/h
Number of Speeds, fwd	2
Number of Speeds, rev	1
AXLES	
Differential Front Type	Conventional
Differential Rear Type	Conventional
Axle Oscillation	±12°
STEERING	
Steering Configuration	Articulated
Steering System Pressure	16 Mpa

BRAKES	
Service Brake Type	Caliper disc brake
Service Brake Actuation	Air over Hydraulic
Parking Brake Type	Flexible shaft control
Parking Brake Actuation	Mechanical
TIRES	
Tire Size	23.5-25 L3
HYDRAULIC SYSTEM	
Main Pump Type	Gear
Main Relief Pressure	18 Mpa
Raise time	5.5 S
Total Cycle Time	10.5 S
SERVICE CAPACITY	
Fuel Tank	300 L
Hydraulic oil Tank	170 L
Engine Oil	21 L
Axles, each	29X2 L
Transmission	45 L
Cooling System	23 kg
DIMENSIONS	
Length	8220 mm
Width	3066 mm
Height	3540 mm
Wheelbase	3250 mm
Wheel Tread	2238 mm
Ground Clearance	440 mm
Turn Angle, Either Side	35°
Turning Radius, Outside of Tire	6626 mm
Turning Radius, Center of Tire	6326 mm
Turning Radius, Bucket Carry	7219 mm

OVERALL DIMENSIONS



\* The specifications are subject to change without notice. The pictures may include options. The actual color & appearance of the product may differ from what is shown.

## L68K-B5

- ▶ Engine Model: Weichai WD10G240E201
- ▶ Gross Power: 178kW@2200rpm
- ▶ Operating Weight: 22,500kg
- ▶ Bucket Capacity: 4m<sup>3</sup>

Performance and comfort you can feel,  
Reliability you can trust!



## HS MACHINERY & EQUIPMENT SDN. BHD.

### SHOWROOM

PMT 1280, Lorong Perusahaan Sg. Lokan 3,  
Kawasan Perusahaan Sg. Lokan 13800 B.W.

Tel: 04-3567668 Fax: 04-3567669

[www.hsg.com.my](http://www.hsg.com.my)



# L68K-B5 SPECIFICATIONS

## ENGINE

Emission Regulation	Tier 2 / Stage II
Make	Weichai
Model	WD10G240E201
Rated Power	178 kW @ 2,200 rpm
Max Torque	1000 N · m
Displacement	9.726L
Number of Cylinders	6
Aspiration	Turbocharged

## LOADER ARM PERFORMANCE

Tipping Load - Full Turn	137 kN
Bucket Breakout Force	205 kN
Maximum Dump Angle at Full Height	45°
Dump Clearance at Full Height Discharge	3480 mm
Dump Reach at Full Height Discharge	1300 mm
Maximum Hinge Pin Height	4718 mm
Maximum Digging Depth, Bucket Level	80mm
Bucket Capacity	4m³
Operating Weight	22500kg

## TRANSMISSION

Transmission Type	Planetary, power shift
Torque Converter	Single stage, four elements
Maximum Travel Speed, fwd	37 km/h
Maximum Travel Speed, rev	16 km/h
Number of Speeds, fwd	2
Number of Speeds, rev	1

## AXLES

Differential Front Type	-
Differential Rear Type	-
Axle Oscillation	±12°

## STEERING

Steering Configuration	Articulated
Steering System Pressure	18 Mpa

## BRAKES

Service Brake Type	Caliper disc brake
Service Brake Actuation	Air over Hydraulic
Parking Brake Type	Air brake
Parking Brake Actuation	Mechanical

## TIRES

Tire Size	26.5-25
-----------	---------

## HYDRAULIC SYSTEM

Main Pump Type	Gear
Main Relief Pressure	21 Mpa
Raise time	5.3 S
Total Cycle Time	9.97 S

## SERVICE CAPACITY

Fuel Tank	330 L
Hydraulic oil Tank	255L
Engine Oil	21 L
Axles, each	41LX2
Transmission	45 L
Antifreeze	80 L

## DIMENSIONS

Length	9320 mm
Width	3080 mm
Height	3570 mm
Wheelbase	3500 mm
Wheel Tread	2250 mm
Ground Clearance	510 mm
Turn Angle, Either Side	35°
Turning Radius, Outside of Tire	6955 mm
Turning Radius, Center of Tire	6675 mm
Turning Radius, Bucket Carry	7686 mm
Maximum Raise Hight	4718 mm

